

Panel-Loc Plus™

Wall and Roof Panel



Superior *durability* with an attractive appearance

Panel-Loc Plus™ provides superior durability by adding a striation on top of the rib, giving it even more strength and protection against leaking. Available in 3 options, Panel-Loc Plus™ gives residential, agricultural, and light commercial projects the protection of steel with an attractive appearance.

Panel-Loc Plus™ from Central States® has become the standard for excellence in the industry.

- Employs a drain channel that guards against wind, rain, and snow; minimizing leaks.
- Wide fastening surface for easy application.
- Unique lap groove hides the overlap, giving a smooth, clean appearance.



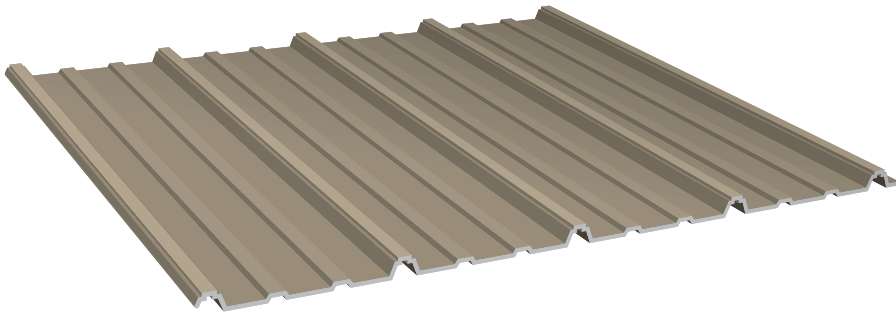
RECOMMENDED 3:12 PITCH AND ABOVE	29 OR 26 GAUGE	36" OVERALL COVERAGE	3/4" MAXIMUM RIB HEIGHT
--	---------------------------------------	-----------------------------------	--------------------------------------



WWW.CENTRALSTATESMFG.COM

Copyright © 2015, Central States Manufacturing, Inc., All Rights Reserved.
Galvalume® is a registered trademark of BIEC International, Inc.

CE FLYR_PLP_160602



Choose a *panel quality* that works best for your project and budget.

For a small amount more upgrade to

Ultra
26 Gauge

Prime
29 Gauge

Thrifty
29 Gauge

The industry leader

Least expensive option

PREMIUM OPTION

CENTRALGUARD® PROTECTION

Yes

Yes

No

FADE RESISTANCE

40%
More Resistance than Thrifty

40%
More Resistance than Thrifty

Basic Resistance

DENT RESISTANCE

223%
More Resistance than Thrifty

40%
More Resistance than Thrifty

Basic Resistance

RUST RESISTANCE

135%
More Coating than Thrifty

135%
More Coating than Thrifty

Basic Coating

WARRANTY

20 Year Rust-Through
30 Year Chalk & Fade
40 Year Paint Adhesion

20 Year Rust-Through
30 Year Chalk & Fade
40 Year Paint Adhesion

NO Rust-Through
NO Chalk & Fade
20 Year Paint Adhesion

CentralGuard® is an advanced system engineered by Central States®, to protect our metal against fade, dent, and rust.



MINIMUM SPECIFICATIONS ULTRA AND PRIME

GAUGE

Ultra 26ga | Prime 29ga

STEEL THICKNESS

Ultra 0.0185" | Prime 0.0150"

PAINT THICKNESS

Top coat paint: .70-.80 mils
Top coat primer: .20-.30 mils
Bottom coat backer: .35 mils
Bottom coat primer: .35 mils

TOTAL THICKNESS

Ultra 0.0202" | Prime 0.0167"

RUST PROTECTANT SUBSTRATE

Galvalume® AZ55, acrylic bare
Galvalume® AZ50, painted

STEEL STRENGTH

80,000 PSI min

PAINT SYSTEM

CentralGuard®, powered by Valspar®

WARRANTY

40 yr paint adhesion
30 yr chalk and fade
20 yr Galvalume® perforation warranty

TESTING & APPROVALS

TESTING

TAS 100-95 Wind Driven Rain Test
TAS 125-03 Uplift Resistance Test, 29 gauge
UL580 Uplift Resistance Test, 29 gauge
ASTM-E455 Diaphragm Shear Standard Test, 26 gauge
ASTM-E455 Diaphragm Shear Standard Test, 29 gauge

APPROVALS

UL2218 UL Approval, Impact Resistance, Class 4
UL580 UL Approval, Uplift Resistance, Class 90
UL790 UL Approval, Fire Resistance, Class A
RC-325 Texas Windstorm Approval, 29 gauge over wood purlins
RC-326 Texas Windstorm Approval, 29 gauge over decking
FL14026.2 Florida Approval, Roof Panel over 15/32" Plywood
FL14026.3 Florida Approval, Roof Panel over 15/32" Plywood (NON-HVHZ)
FL14026.4 Florida Approval, Panel over 2X4's (NON-HVHZ)

For more information visit
www.AllMetalNotEqual.com

CentralGuard® is a trademark of Central States® Manufacturing, Inc.