



www.randbmetalstructures.com

American Owned and Operated!

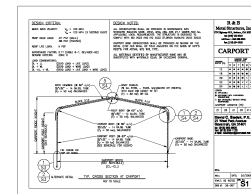


STANDARD

ALL KINDS OF CLOSED GARAGES
CUSTOM SIZES/COLORS
AVAILABLE

CALL YOUR DEALER

TEL.



Certified
drawings
available



Let us show you
what service
should be like!

WE ACCEPT



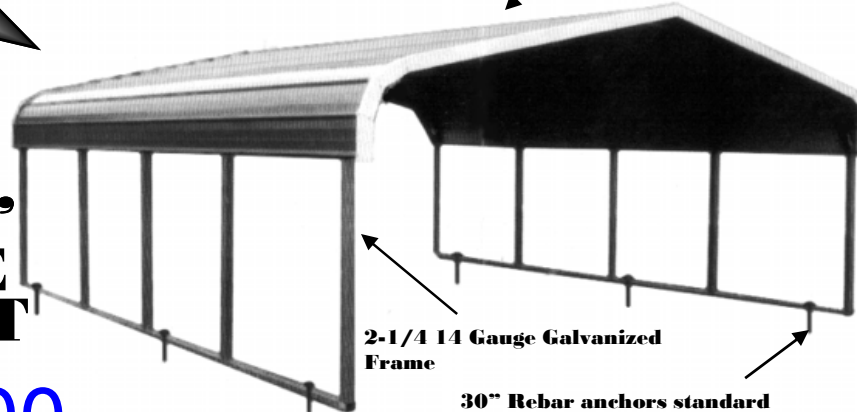
F104109A

THERE MAY BE A 20% RESTOCKING FEE ON CHANGES MADE AFTER 72 HRS. OF ORDER.



ON YOUR
LEVEL
LAND

29 Gauge STEEL
Roof



18' X 21'
DOUBLE
CARPORT

\$ 695.00
Standard

14 Gauge, 5' Legs

- Prices are for top only.
- Please check our options on back
- Note: Frame 1FT. Shorter than roof length.

14 Gauge	12X21	\$595	18X21	\$695	20X21	\$1,045	22X21	\$1,295	24X21	\$1,495
	12X26	\$995	18X26	\$1,145	20X26	\$1,345	22X26	\$1,595	24X26	\$1,695
	12X31	\$1,195	18X31	\$1,395	20X31	\$1,595	22X31	\$1,895	24X31	\$2,195
	12X36	\$1,495	18X36	\$1,595	20X36	\$1,895	22X36	\$2,195	24X36	\$2,495
	12X41	\$1,595	18X41	\$1,795	20X41	\$2,195	22X41	\$2,495	24X41	\$2,695
12 Gauge	12X21	\$895	18X21	\$995	20X21	\$1,295	22X21	\$1,495	24X21	\$1,695
	12X26	\$1,095	18X26	\$1,295	20X26	\$1,595	22X26	\$1,795	24X26	\$2,095
	12X31	\$1,295	18X31	\$1,595	20X31	\$1,895	22X31	\$2,195	24X31	\$2,495
	12X36	\$1,595	18X36	\$1,895	20X36	\$2,195	22X36	\$2,595	24X36	\$2,875
	12X41	\$1,795	18X41	\$2,095	20X41	\$2,495	22X41	\$2,895	24X41	\$3,295




OPTION LIST

TO CLOSE ONE SIDE OR ONE END, SIMPLY DIVIDE THE PRICE IN 1/2.

	LEG HEIGHT	21' Long	26' Long	31' Long	36' Long	41' Long
Carpport Heights	5 feet	Standard	Standard	Standard	Standard	Standard
	6 feet	\$55	\$75	\$100	\$105	\$115
	7 feet	\$115	\$125	\$135	\$175	\$195
	8 feet	\$155	\$185	\$205	\$245	\$275
	9 feet	\$195	\$235	\$245	\$315	\$355
	10 feet	\$235	\$285	\$305	\$375	\$415
	11 feet	\$300	\$350	\$370	\$440	\$480
	12 feet	\$345	\$385	\$415	\$485	\$525

	LEG HEIGHT	21' Long	26' Long	31' Long	36' Long	41' Long
Close Both Sides	5 feet	\$325	\$395	\$475	\$545	\$625
	6 feet	\$350	\$425	\$465	\$575	\$650
	7 feet	\$425	\$485	\$595	\$685	\$785
	8 feet	\$430	\$540	\$635	\$750	\$875
	9 feet	\$450	\$560	\$650	\$795	\$950
	10 feet	\$565	\$695	\$795	\$895	\$995
	11 feet	\$655	\$800	\$895	\$1,100	\$1,240
	12 feet	\$725	\$925	\$1,050	\$1,250	\$1,350
	Extra side panel	\$90	\$115	\$125	\$145	\$165

	LEG HEIGHT	12' Wide	18' Wide	20' Wide	22' Wide	24' Wide
Close Both Ends	5 feet	\$700	\$850	\$1,000	\$1,050	\$1,250
	6 feet	\$850	\$1,000	\$1,050	\$1,150	\$1,450
	7 feet	\$900	\$1,050	\$1,150	\$1,300	\$1,500
	8 feet	\$950	\$1,100	\$1,200	\$1,400	\$1,550
	9 feet	\$1,000	\$1,200	\$1,250	\$1,450	\$1,650
	10 feet	\$1,150	\$1,350	\$1,500	\$1,700	\$1,900
	11 feet	\$1,250	\$1,500	\$1,750	\$1,900	\$2,100
	12 feet	\$1,350	\$1,600	\$1,800	\$2,000	\$2,250

Extras	Windows 24" x 36" \$100	Walk-In Door 34" x 80" \$200		Gable End \$175 All Sizes	Garage Doors	
	Braces Corner 30" \$10 Each Roof 48" \$20 Each	Anchor to Concrete \$25		Anchors  Mobile Home Anchors \$25 Each	5x7 \$275	8x8 \$325
		Garage door on side Add \$150 per door			9x8 \$350	10x8 \$375
	Connect units end to end \$100				10x10 \$425	Extra Bow \$100 with 5' legs (Add \$10 for each additional foot in height)

We recommend braces for 8' and taller legs

Dutch Opening \$25 per opening

Larger Garage Doors available, Call for a quote.