



24x41x9 As pictured \$8,470.00

3 10x8 Garage Doors, 1 Walk-Thru, 4 Windows



www.randbmetalstructures.com

American Owned and Operated!



2 8x7 Garage Doors, 1 Walk Thru, 1 Window

20x21x8 As pictured \$4,540.00

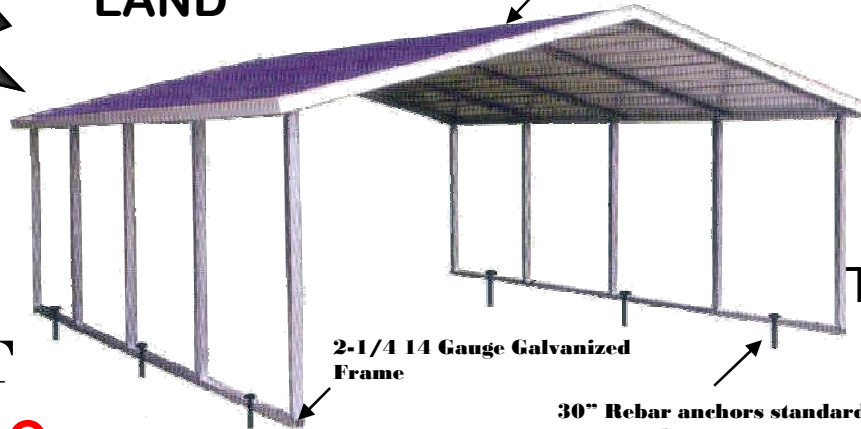
THERE MAY BE A 20% RESTOCKING FEE ON CHANGES MADE AFTER 72 HRS. OF ORDER.

**FREE
INSTALLATION**

**ON YOUR
LEVEL
LAND**



29 Gauge STEEL
Roof



2-1/4 14 Gauge Galvanized
Frame

30" Rebar anchors standard
on ground

A-FRAME

ALL KINDS OF CLOSED GARAGES

CUSTOM SIZES/COLORS
AVAILABLE

CALL YOUR DEALER

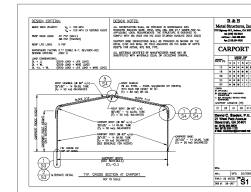
TEL.

**18' X 21'
DOUBLE
CARPORT**

\$ 795.00

**A- Frame
14 Gauge, 6' Legs**

- Prices are for top only.
- Please check our options on back
- Note: Frame 1FT. Shorter than roof length.



**Certified
drawings
available**

**Upgrade to a
Vertical Roof**

14 Gauge	12X21	\$695	18X21	\$795	20X21	\$1,095	22X21	\$1,395	24X21	\$1,595
	12X26	\$1,095	18X26	\$1,195	20X26	\$1,495	22X26	\$1,695	24X26	\$1,895
	12X31	\$1,395	18X31	\$1,495	20X31	\$1,795	22X31	\$1,995	24X31	\$2,395
	12X36	\$1,695	18X36	\$1,795	20X36	\$2,095	22X36	\$2,395	24X36	\$2,695
	12X41	\$1,795	18X41	\$1,995	20X41	\$2,395	22X41	\$2,695	24X41	\$2,895
12 Gauge	12X21	\$995	18X21	\$1,095	20X21	\$1,295	22X21	\$1,495	24X21	\$1,695
	12X26	\$1,195	18X26	\$1,395	20X26	\$1,595	22X26	\$1,895	24X26	\$2,095
	12X31	\$1,495	18X31	\$1,695	20X31	\$1,995	22X31	\$2,295	24X31	\$2,595
	12X36	\$1,795	18X36	\$1,995	20X36	\$2,395	22X36	\$2,695	24X36	\$2,995
	12X41	\$1,895	18X41	\$2,295	20X41	\$2,695	22X41	\$3,095	24X41	\$3,495

Let us show you
what service
should be like!

WE ACCEPT





OPTION LIST

TO CLOSE ONE SIDE OR ONE END, SIMPLY DIVIDE THE PRICE IN 1/2.

	21' Long	26' Long	31' Long	36' Long	41' Long
Vertical Roof	\$400	\$500	\$600	\$700	\$800
Vertical Sides/Ends	\$1,000	\$1,150	\$1,300	\$1,450	\$1,600

LEG HEIGHT		21' Long	26' Long	31' Long	36' Long	41' Long
Carpport Heights	6 feet	Standard	Standard	Standard	Standard	Standard
	7 feet	\$55	\$75	\$100	\$105	\$115
	8 feet	\$115	\$125	\$135	\$175	\$195
	9 feet	\$155	\$185	\$205	\$245	\$275
	10 feet	\$195	\$235	\$245	\$315	\$355
	11 feet	\$235	\$285	\$305	\$375	\$415
	12 feet	\$300	\$350	\$370	\$440	\$480

LEG HEIGHT		21' Long	26' Long	31' Long	36' Long	41' Long
Close Both Sides	6 feet	\$350	\$425	\$465	\$575	\$650
	7 feet	\$425	\$485	\$595	\$685	\$785
	8 feet	\$430	\$540	\$635	\$750	\$875
	9 feet	\$450	\$560	\$650	\$795	\$950
	10 feet	\$565	\$695	\$795	\$895	\$995
	11 feet	\$655	\$800	\$895	\$1,100	\$1,240
	12 feet	\$725	\$925	\$1,050	\$1,250	\$1,350
	Extra side panel	\$90	\$115	\$125	\$145	\$165

LEG HEIGHT		12' Wide	18' Wide	20' Wide	22' Wide	24' Wide
Close Both Ends	6 feet	\$850	\$1,000	\$1,050	\$1,150	\$1,450
	7 feet	\$900	\$1,050	\$1,150	\$1,300	\$1,500
	8 feet	\$950	\$1,100	\$1,200	\$1,400	\$1,550
	9 feet	\$1,000	\$1,200	\$1,250	\$1,450	\$1,650
	10 feet	\$1,150	\$1,350	\$1,500	\$1,700	\$1,900
	11 feet	\$1,250	\$1,500	\$1,750	\$1,900	\$2,100
	12 feet	\$1,350	\$1,600	\$1,800	\$2,000	\$2,250

Extras	Windows 24" x 36" \$100	Walk-In Door 34" x 80" \$200		Gable End \$175 All Sizes	Garage Doors	
	Braces Corner 30" \$10 Each	Anchor to Concrete \$25		Anchors Mobile Home	5x7	\$275
		Garage door on side Add \$150 per door			8x8	\$325
	Roof 48" \$20 Each	Connect units end to end \$100		Anchors \$25 Each	9x8	\$350
					10x8	\$375
				10x10	\$425	
				Extra Bow \$100 with 6' legs (Add \$10 for each additional foot in height)		

We recommend braces for 8' and taller legs
Dutch Opening \$25 per opening
Larger Garage Doors available, Call for a quote.